



The Franklin E-PWR® Lite Collection

1,459-1,907 sq. ft. | 2-4 beds | 2.5 - 3.5 baths

Loretto Heights Community

Welcome to Denver's new Loretto Heights. Situated in a secluded hilltop setting, Loretto Heights offers spectacular mountain views and a welcoming sense of tranquility and calmness. As one of Denver's central, historic neighborhoods, with easy access to culture and everything the city has to offer, you are only 8 miles away from Downtown Denver, minutes from the Santa Fe Light Rail Station, and close to the mountains.

E-PWR® Features and Amenities

<p>Zero Energy Ready Home Whirlpool Energy Star Rated Appliances 65-Gallon Hybrid Electric Water Heater Recirculating Heat Pump Technology SMART Thermostat Technology WiFi Enabled Garage Door Opener</p>	<p>Solar Panel 100% LED Lighting Fixtures 220V EV Ready Outlet WiFi Enabled Garage Door Opener Indoor airPLUS Certified No VOC Paint Active Radon Mitigation LVP Flooring on Main Level</p>	<p>Granite Countertops Merillat Cabinetry Classic Collection 42" Upper Kitchen Cabinets Delta WaterSense Plumbing Fixtures Dual Vanity in Primary Bath Walk-in Closet in Primary Suite Rough-in Plumbing in Basement Double-paned Windows Ceiling Fan Pre-wire in Bedrooms</p>
--	---	--

Why a Thrive Home?

Signifying the next chapter of this historic Loretto Heights community and for Thrive, these modern, all-electric homes focus on comfort, energy efficiency, and the health of the homeowners. Thrive's all-electric home collection features an energizing fusion of the past and present with the use of progressive and efficient electric features perfectly in balance with solar power.



Homes that do more.

Thrive Home Builders is a registered trademark of NT Builders, LLC. Thrive Home Builders reserves the right to make changes in price, color, materials, features, specifications, models, options, and availability at any time without notice. Floor plans and elevations are conceptual and should not be relied upon as a precise representation of a completed house. Floor plans, elevations, dimensions, square footages, and related information are approximate and subject to change without prior notice. Field conditions including dimensions and square footages will vary. Drawings shown are not to scale. ©2024 NT Builders, LLC. No reproductions or other use of these plans may be made without express written consent of NT Builders, LLC.



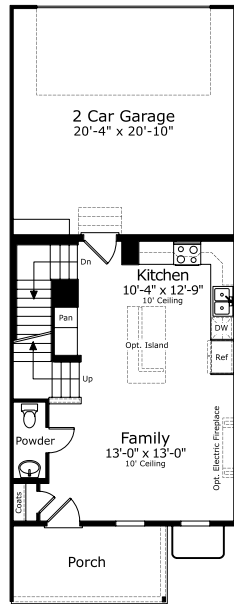
Thrive Home Builders
1200 17th St. Suite 660
Denver, Colorado 80202

discover@thrivehomebuilders.com
303.707.4415
thrivehomebuilders.com

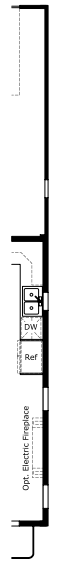
Denver | Fort Collins | Broomfield | Lone Tree

Available Options

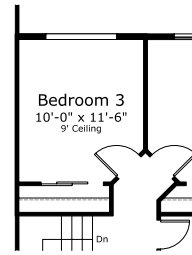
- Professionally Curated Design Packages
- Electric Fireplace
- Floor to Ceiling Tile at Fireplace
- 3rd Bedroom ilo Loft
- Finished Basement
- Spacious Kitchen Island
- KitchenAid Induction Appliance Package
- HEPA Filtration System
- Humidifier



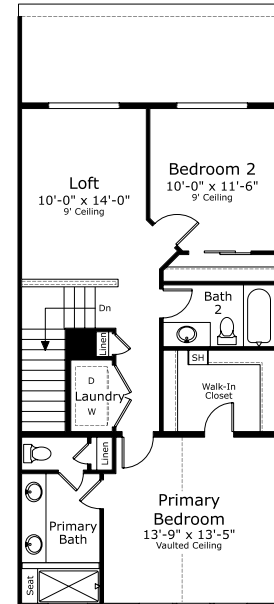
Main Level



End Unit



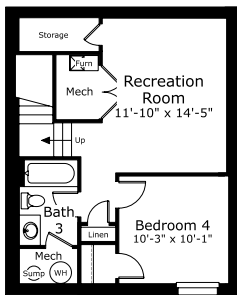
Optional Bedroom 3



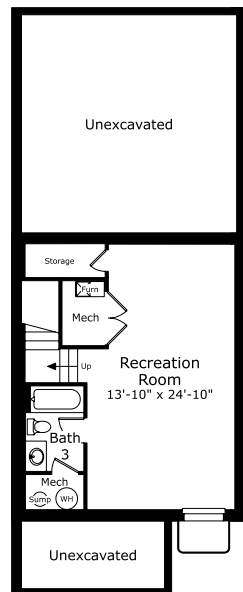
Upper Level



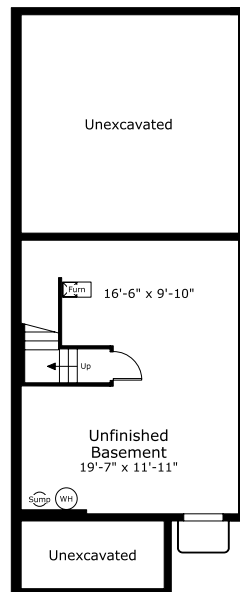
End Unit



Optional Bedroom 4



Optional Finished Basement



Basement



End Unit



Homes that do more.

Thrive Home Builders is a registered trademark of NT Builders, LLC. Thrive Home Builders reserves the right to make changes in price, color, materials, features, specifications, models, options, and availability at any time without notice. Floor plans and elevations are conceptual and should not be relied upon as a precise representation of a completed house. Floor plans, elevations, dimensions, square footages, and related information are approximate and subject to change without prior notice. Field conditions including dimensions and square footages will vary. Drawings shown are not to scale. ©2024 NT Builders, LLC. No reproductions or other use of these plans may be made without express written consent of NT Builders, LLC.



Thrive Home Builders
1200 17th St. Suite 660
Denver, Colorado 80202

discover@thrivehomebuilders.com
303.707.4415
thrivehomebuilders.com

Denver | Fort Collins | Lone Tree